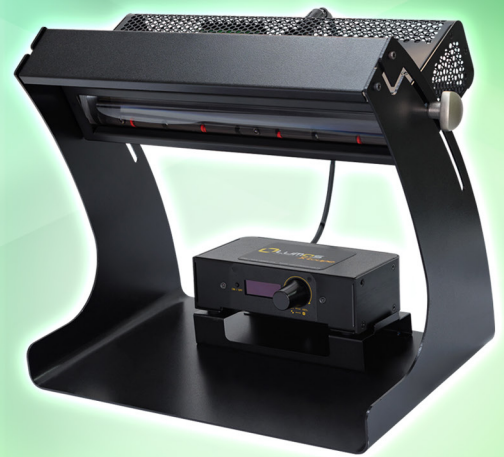
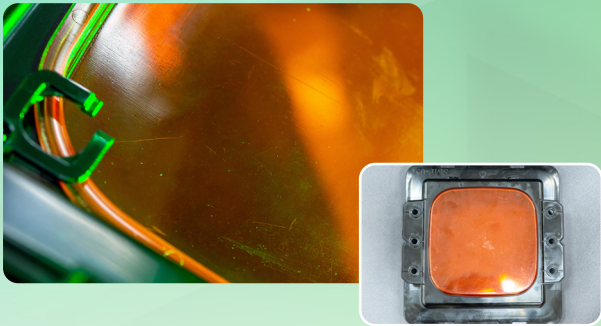


Inspection Task Lighting

(platform type)

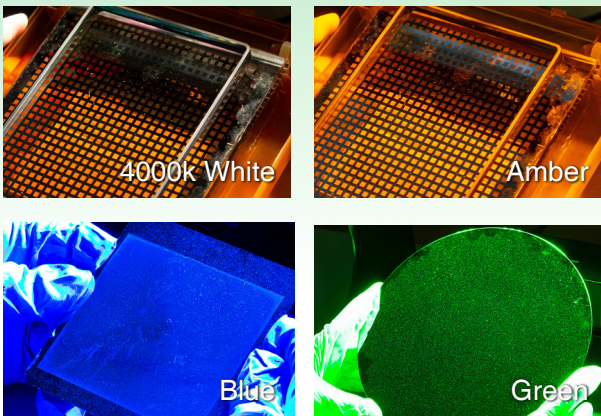


With wavelengths-switchable special light sources, to aid visual inspection, make instant detections for small contaminants and various types of defects (such as scratches, dirt, etc.) on the products (e.g. wafer) of large-area surfaces.



Application

- » Wafer surface dust particles and defect inspection
- » Wafer mask sticky dust particles and defect inspection
- » Mask Package (e.g. RSP200) sticky dust particles inspection
- » Transparent materials such as glass, or scratches on metal surfaces
- » Mechanical parts / Component appearance Inspection (Flaws, Defects)

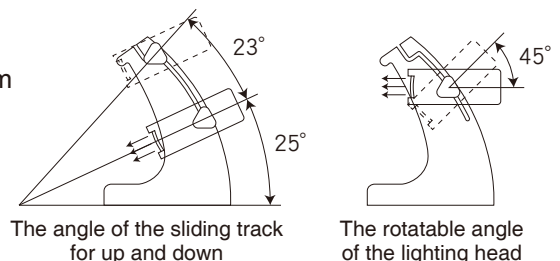


Features

- ✓ 4 light sources (4000k White / Amber / Blue / Green) to choose from (4 choose 2)
- ✓ Dual light source channels can be switched
- ✓ The intensity of the light can be freely adjusted (dimming range: 0%~100%)
- ✓ Support the use of foot switch to shift the light source channel
- ✓ Stainless steel
- ✓ With the air vent above the light bar top, cuboid metal mesh cover, provides good heat dissipation

Benefits

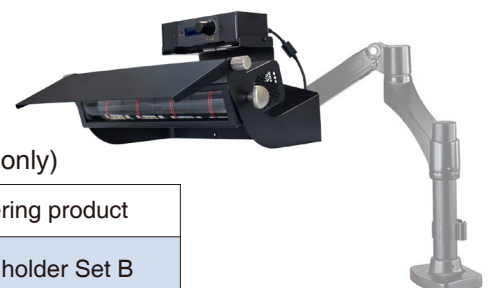
- ◎ With standardized parts and independent modules, to create more flexible lighting option
- ◎ The illumination angle of the light bar on the bracket for the platform type is adjustable (sliding track for up and down is about 23° / lighting head is rotatable for 45°)
- ◎ Use a foot switch to control and switch the light sources, user can concentrate on product inspection
- ◎ Stainless steel, durable and hygienic, suitable for clean room
- ◎ The large air vent allows a plenty, in-and-out air for the effective fanless air cooling



Product data

This product consists of the following main component / modules:
lamp holder set (light bar and control unit included), bracket (platform type only)

Inspection Task Lighting	Standard spot product	Ordering product
lamp holder Set (light bar and control unit included)	lamp holder Set A	lamp holder Set B
Bracket	Flat-base Stand	--- (Note)

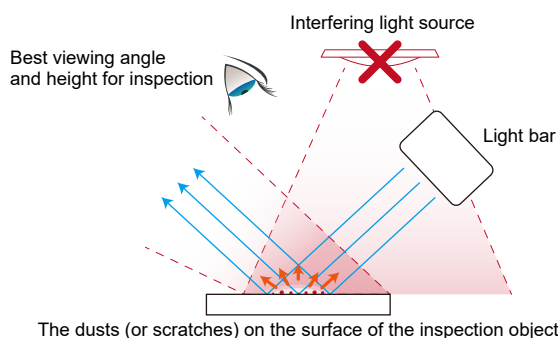


Note: The Interfaces (VESA rack hole 100x100mm) on the Lamp holder set B fix to a VESA-mount bracket stand (bear weight at least 2.2kg), that make it can also be used for wall hanging or table use. (As shown on the right-combination schematic diagram)

Usage Tips

» The indoor lighting environment «

While making inspection on platform, if there are too many bright spots (light sources) in a room, there will be too much diffused light interfere with each other on the object surface, that will affect the inspection due to lack of a contrast.



Lamp Holder Set (c / w Light Bar and Control Unit)

Control Unit		
Function	Power On, Off / Light Channel Switch / Lighting & Dimming Control	
LCD Status Display	Battery check / Lighting Position / Lighting Intensity (0 ~ 100%)	
Power input	DC 19V / 4.7A	
Charging method	With the Power adapter (DC 19V / 4.7A) included in the product set to charge via a wall outlet	
Material	Steel, Aluminum	
Weight	545g	
Dimension(mm)	155 (L) x 115 (W) x 50(H)	
Power cable length	30 cm	
Operation Environment	0~40°C	
Light Bar		
Channel & Light source	Switchable dual light source channels 4 LED wavelengths (4000k White, Amber, Blue and Green colors) are available for users to choose from (choose 2 from 4)	
Dimming intensity	Intensity is dimmable from 1% to 100% (default setting 50%)	
Power Consumption	21W (Max)	
Power input	DC 80.2V / 0.25A	
Illuminance	(White light : distance 0 cm) Intensity (default) setting 50% : luminance > 4500lux ; Intensity setting 100% : luminance > 8000lux	
Dimension (mm)	320 (L) x 111 (W) x 58 (H)	
Weight	1580g	
Material	Stainless Steel (#304)	
Operation Environment	0~40°C	
Bracket		
	Flat-base Stand	VESA-mount
Material	Stainless Steel (#304)	
Weight	2200g	850g
Dimension (mm)	357 (L) x 295 (W) x 280(H)	357 (L) x 200 (W) x 160(H)

*We (Lumos Tech.) reserves the right to change the product appearance or specification. The contents of catalogs / manuals are subject to change without prior notice.

Distributor



7th floor, No.8, Wanhe St., Wenshan District,
11653 Taipei City, Taiwan, R.O.C.
TEL:886-2-2230-1168 FAX:886-2-2239-2112
e-mail:contact@lumos.com.tw
www.x-loupe.com



Lumos Technology Co. Ltd.