



**X-Loupe**<sup>®</sup>  
Ultra Close-up Ring Light

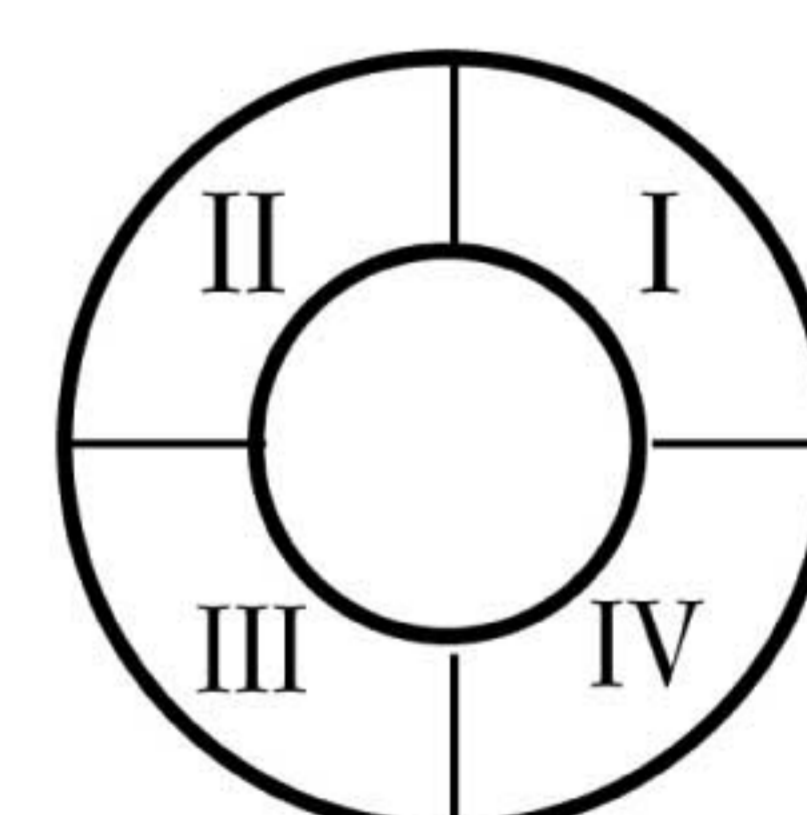
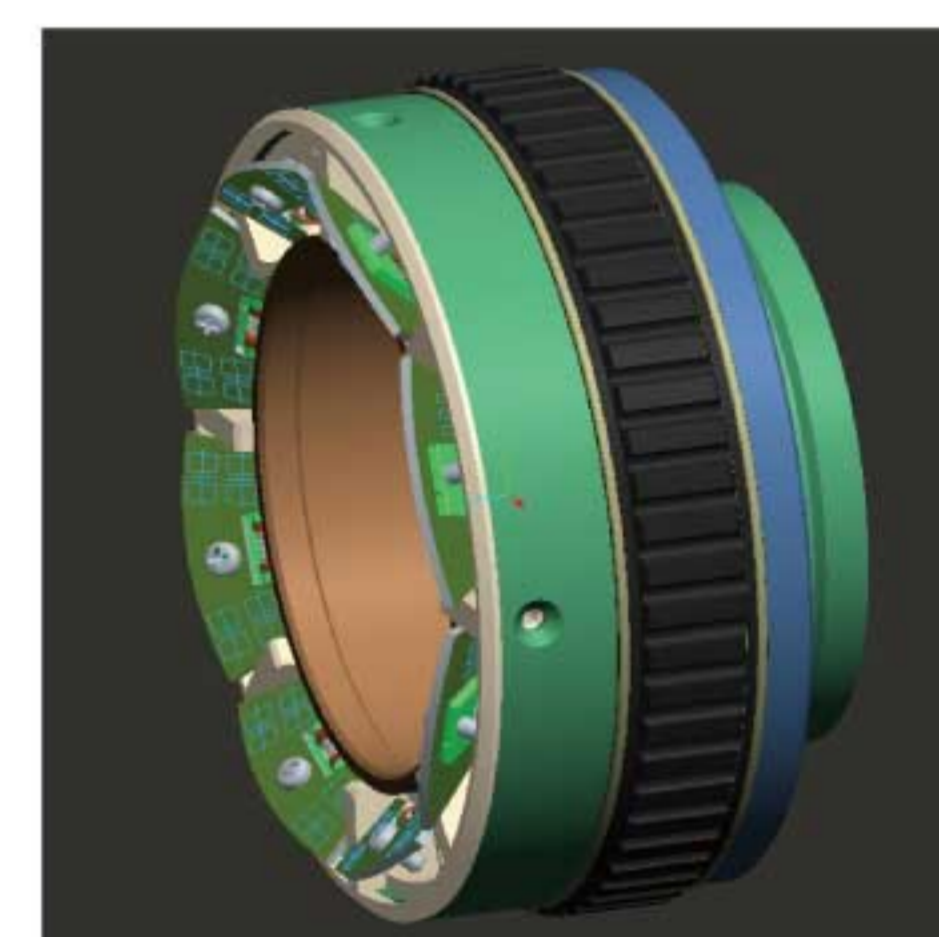
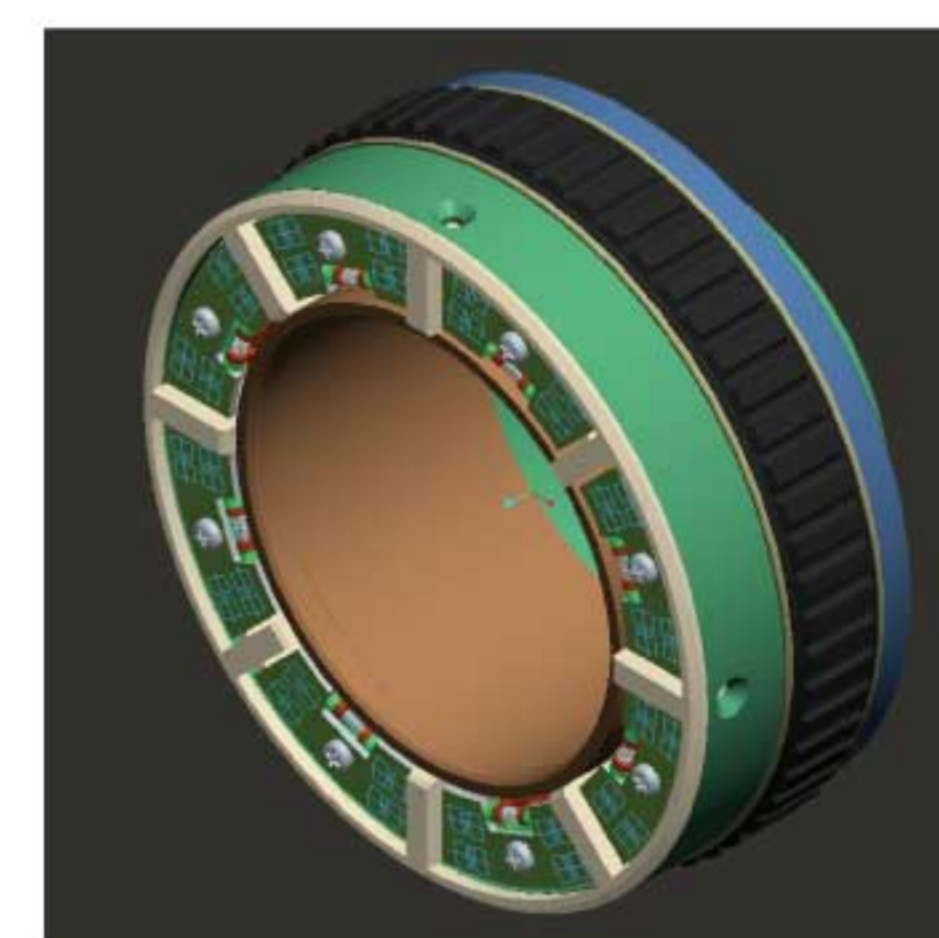
**[ UCRL ]**

External ultra close-up ring light is designed with special purpose for micro-shooting, capable of simplifying the complicated setting of light source and flexibly applying the changes of angle to make the effective image shooting.

Highly-bright LED with a long service life is provided and even brightness is adopted to provide a 360 range lighting space free of shadowing, and to professionally finish various evidences shooting with an all-round light source to easily emphasize the stereoscopic impression.

## Feature

- (1) Super bright LED, low consumption, long service life up to 30,000 hours, provides a highly bright lighting.
- (2) Three-wave length white LED has high color rendering index.( CRI 85)
- (3) With changeable angles lighting, the patented design is unique in the world, enhances camera to realize extra macro photography in 1-15 cm.
- (4) Six-stage inching switch is capable of adjusting the brightness between 0 ~100%.
- (5) Nine light and shadow modes to add stereoscopic impression to the images.
- (6) The light sources are designed with Turbo which is available to output two times of brightness
- (7) The design of Light Dome allows the soft and uniformed lighting as well as centralized lighting upon the requirement.
- (8) The design of switchable double color temperature can be used to select various light sources such as white or yellow light in accordance with the feature of the observed objects and the specific situation, with the purpose of getting the best observation effect.
- (9) The fixed seat can be dismounted rapidly and conveniently. A 52mm image filter can be equipped additionally.
- (10) In compliance with FC, CE and RoHS.



### Nine lighting modes

- All lights on
- II and III on
- III and IV on
- IV and I on
- I and II on

Or make all lights on, available to allow one side to be 2 times brighter than the other side.

■ Application Suitable for inspection in fields such as Printing plants, Textile plants, Biology, Electronic manufacturing, Precise processing, Jewelry, Metal surface or Fingerprint identification.

Field	Application	Specially Applied Specification
Criminal identification	Collection of evidence (such as fingerprint) at criminal scene	<ul style="list-style-type: none"> <li>Applied to GFP light source to satisfy the demand of gene experiment</li> <li>With non-destructive test, which reaches the standard of UV/white light source for the industries such as Aerospace industry</li> <li>With IR source specification to meet the requirement of infrared photography</li> </ul>
Dentistry, dermatology	Case study and before/ after case image	
Botany	Real image record of the flower/ leaf/ fruit; insects disease	
Geology	Data collection for the field study	
Insurance industry	Proof finding for claim	
Manufacturing industry	Non-destructive test and visual inspection	
Online auctioning	Photography of small-sized goods	

### X-Loupe® UCRL specification White-light+UV-light LED

Item		Specification
Light source		0.3W high -CRI 6000°K LED (x16) 0.12W 365nm White -light LED (x32)
White -light LED	White -light LED Color Gamut	6000°K : NTSC 85 %
	Color Temperature	White : 6000°K±10 %
	Luminance (For best angle of the light source)	3 cm in front of the lens : 22000lux 10 cm in front of the lens : 6000lux 30 cm in front of the lens : 1200lux
Life span		10000HRs
luminance modulation		4 segments control function provides 9 kinds of lighting mode
Filter ring diameter		49 mm
modulate Range		0~100 % 6 digital settings for luminance modulation
Display		luminance modulation Status ; Light Status, ; Battery Status
Current Consumption (general light)		650 mA
Battery		1700mAh Li - ion Rechargeable battery (Ricoh DB -90 compatible)
Battery Duration		(general light) Around 2.5Hrs
Max. Dimension (mm)		110*8 3*130mm
Weight		620 g
Operation Environment		0-40 °C
Declaration of conformity		FCC 、 CE

<This specification is for the reference only. Further revision will no be notified.>

X-Loupe® is protected by the following patents: Taiwan: Patent #M363750. #M375227 ; China: Patent #M375227

7th floor, No.8, Wanhe St., Wenshan District,  
116 Taipei City, Taiwan, R.O.C.  
TEL:886-2-2230-1168 FAX:886-2-2239-2112  
e-mail:service@lumos.com.tw  
<http://www.x-loupe.com> <http://www.lumos.com.tw>

  
Lumos Technology Co. Ltd.