

X-Loupe®

Portable Microscope Camera

C101 PORTABLE MICROSCOPE CAMERA

Win from the moment you shoot and get!



Designed to provide highest versatility and adaptability, the X-Loupe® C101 portable microscope camera shoots micro photos anytime, anywhere with any angles.

Combined with Canon Camera auto focus and over 12 megapixel features, the fast image capturing meets the

requirements of professionals. The outstanding illumination technology and high resolution of X-Loupe® C101 is a first choice imaging solution in broad range of applications including NDT, Semiconductor, Forensic, and Anti-Counterfeiting.

• All in one device

Get in and out. No more carrying multiple devices. No more lighting issues. From macro to micro, X-Loupe® C101 provides an excellent way to quickly and easily snap image or video detailing down to 5µm with lead-free Schott® Lenses of 80x and 160x magnification.

• Adaptability and Portability

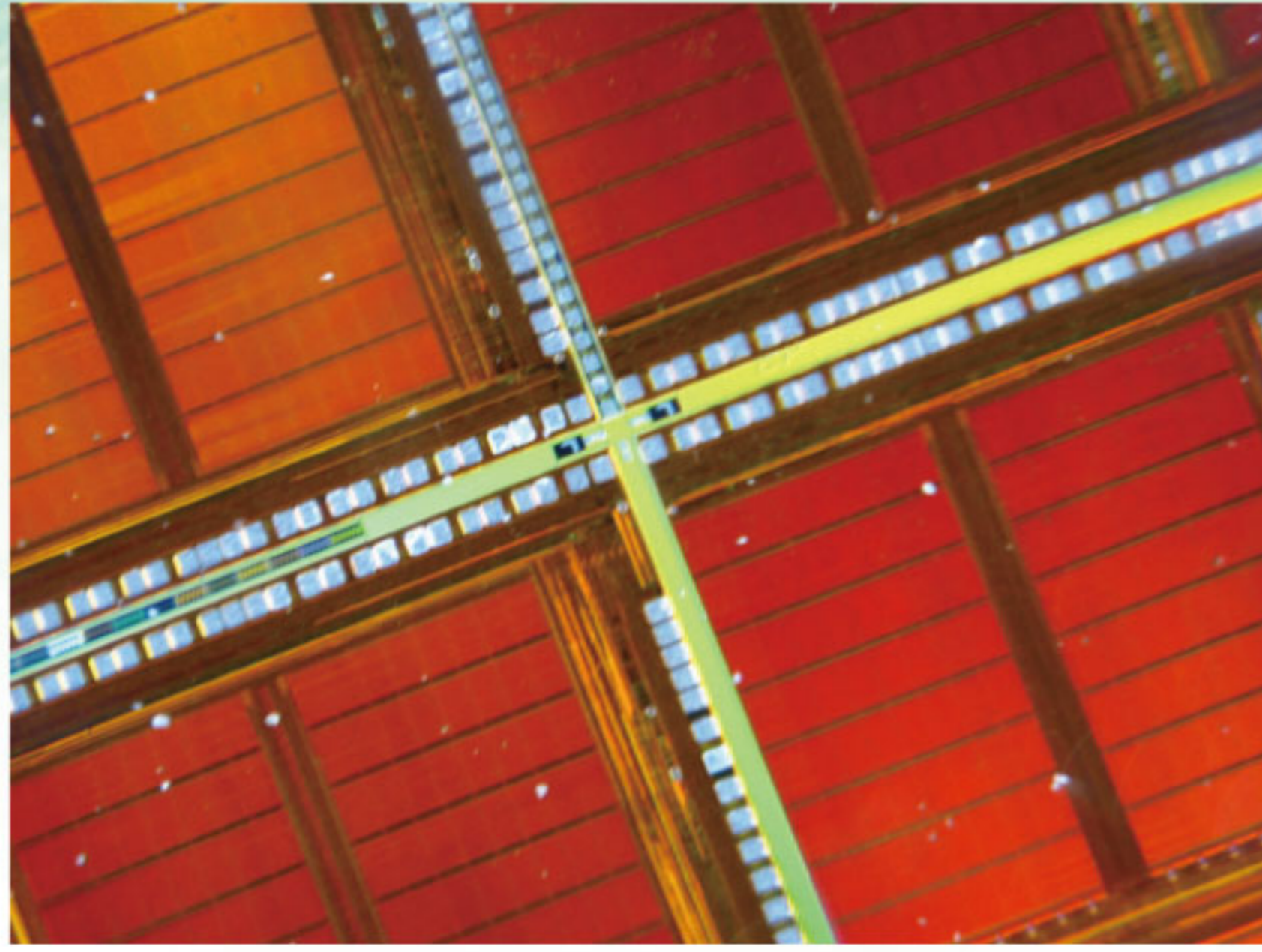
Get to the spot with what you need for decision making. X-Loupe® C101 can be brought to the location of your object allowing important decisions to be made on the spot. And quick releases lock for changing lenses in different magnification powers and adapt illumination.

• Pioneer Illumination

Get your object in the spotlight. High precision light diffusing customized White/UV/IR LED lenses optimize illumination and light evenness, also reduce exposure time thereby reducing negative effects of hand shaking.



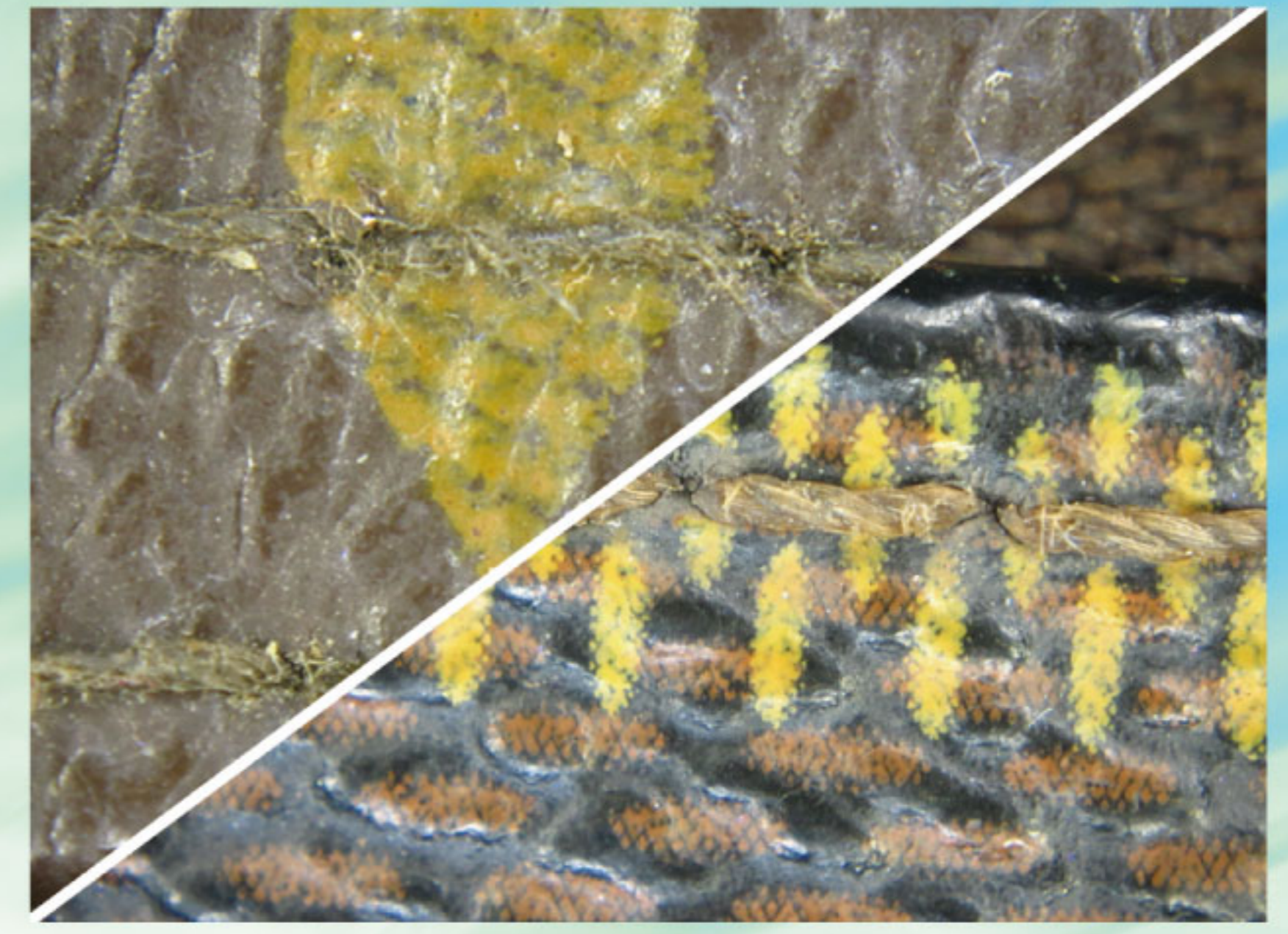
Application



Semiconductor



Forensics



Anti-Counterfeit (Luxury brand bag)

X-Loupe® Conceiver Series_C101 Specification

	X-Loupe® Starter	X-Loupe® Pro
Included Number of Objective Lens	1	2
Magnification Power	80X	80X · 160X
FOV (Field of View)	80X : 12.9x9.6mm, 160X : 4.5x3.4mm	
Lens Material & Design	Schott® Lead-free Optical Grade Glass, Made in Germany ; High performance aberration-corrected lenses	
Lens Coating	Multi-Layer Anti-Reflection (AR) coating	
Recommended DSC* with Perfect Performance	Canon IXY Digital 220 IS, a.k.a. Digital IXUS 120 IS or PowerShot SD 940 IS Canon IXY Digital 210 F, a.k.a. Digital IXUS 115 HS or PowerShot ELPH 100 HS Canon IXY Digital 200 F, a.k.a. Digital IXUS 105 IS or PowerShot SD 1300 IS (*If the specified Canon camera phased out, Lumos will replace the Canon cameras with same level or higher level cameras)	
Camera Resolution	Approx. 12MP	
DSC* Specification	Please Refer to DSC* Manual	
Built-in Dimmable Illumination	8 White Light LED	
LED Life Cycle	10000Hrs	
Max. Current of Microscope Lens Module	70mA	
Power Source (1. Microscope Lens Module / 2. DSC*)	1. Canon NB-4L or Compatible Rechargeable Li-ion Battery 2. Canon NB-6L Li-ion Battery	
Battery(ies) included	Canon NB-4L Compatible SANYO Li-ion 750mAh UL-certified Battery Cell, with over-current and high-temperature protection circuits	
Max. Capacity of (included) Li-ion Battery	750mAh	
Battery Charging(PLS use the camera's attached charger)	4Hrs for the first time · 1.5Hrs for general usage	
Dimension of Microscope Lens Module	100x 56x 68 mm with 80X lens	
Dimension with Digital Still Camera(DSC*)	100x 56x 88 mm with 80X lens	
Material	Aluminum, Optical Grade Glass, ABS, PC and Latex. RoHS compliant.	
Weight of Microscope Lens Module	Less than 190g	
Weight with DSC*	Less than 335g	
Color Temperature	6000K	
Operating Environment	0 ~ 40° C (32~104° F)	

*DSC: Digital Still Camera(This specification is for the reference only. Further revision will not be notified.)Taiwan: Patent #M315340. #M315354. #M313792. #M292708. #M324200. #M332873. #M354096 ; Japan: Patent #3139250. #3120470. #3142494. #3138313 ; United States: Patent #US7,327,526B1. #US 7,612,945 B2 ; China: Patent #1006570. #1004656. #1085489 ; Germany: Patent # Nr. 20 2007 014 240.4. #Nr. 20 2006 001 999.5. #N. 20 2007 016 015.1

Standard Accessories(C101)

- Microscope Module
- Objective Lenses 80x*1, 160x*1
- Li-ion Battery*1
- Silicon Lens Contact*1(for 80x)
- Battery Charger for module
- Compatible Camera
- W/Standard Accessories



Distributor



7th floor, No.8, Wanhe St., Wenshan District,
116 Taipei City, Taiwan, R.O.C.
TEL:886-2-2230-1168 FAX:886-2-2239-2112
e-mail:service@lumos.com.tw
http://www.x-loupe.com http://www.lumos.com.tw



LUMOS
Lumos Technology Co. Ltd.